

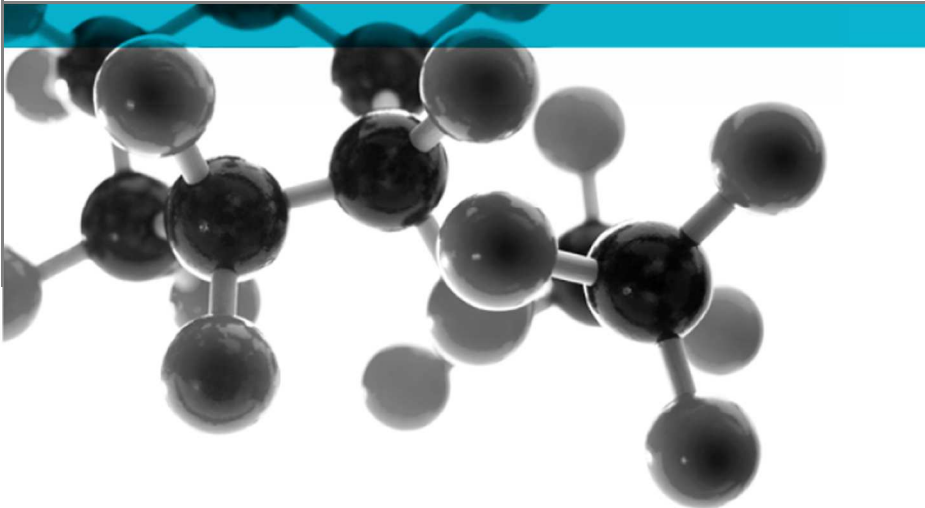
Exova Warringtonfire  
Key Industrial Park  
Fernside Road  
Willenhall  
West Midlands  
WV13 3YA

T : +44 (0) 1902 722 122  
F : +44 (0) 1902 727 242  
E : [willenhall@exova.com](mailto:willenhall@exova.com)  
W : [www.exova.com](http://www.exova.com)



# BS EN 1906 : 2012

## LEVER HANDLES & KNOB FURNITURE



### TESTS OF SPRUNG LEVER FURNITURE

A Report To: **Häfele GmbH & Co KG**  
**Adolf-Häfele-Str. 1**  
**D-72202 Nagold**

Document Reference: **WIL – 349623-1**

Product: **Range of**  
**Lever Furniture**

Date: 18/05/2015

Copy: No 1

Issue No: No 1

Page 1

Testing  
Advising  
Assuring



## TEST CONCLUSIONS

Samples of:  
 Manufacturer Häfele GmbH & Co KG  
 Product Sprung Lever Furniture  
 Model LDH2166, LDH2167, LDH2169, LDH2170, LDH2171, LDH2172, LDH2175, LDH 2176, LDH2178, LDH2180, LDH2180, LDH2181, LDH2183, LDH2184, LDH2186, LDH2187, LDH,2188, LDH2189, LDH2190, LDH2191, LDH2193, LDH2194, LDH2195, LDH2196, LDH2197  
 Size Various

have been tested in accordance with: BS EN1906:2012 Building Hardware-Lever handles and knob furniture. by Exova Warringtonfire [ a UKAS accredited Testing Laboratory (No. 0621).and EC Notified Body number 1104 ]

At Key Industrial Park, Fernside Rd., Willenhall, West Midlands. WV13 3YA.

Results as detailed below:

CLAUSE NO	DESCRIPTION	COMPLIANCE
<b>5</b>	Requirements at Grade 2	Yes
<b>5.2</b>	Check of Spindle and Fastening Elements	Yes
<b>5.3</b>	Rotational Torque Strength	Yes
<b>5.4</b>	Axial strength of lock or latch furniture and fixing	Yes
<b>5.5</b>	Free play	Yes
<b>5.5.2</b>	Safety requirements	N/a
<b>5.6</b>	Free angular movement or misalignment	Yes
<b>5.7</b>	Torque of return mechanism	Yes
<b>5.8</b>	Durability of mechanism	Yes
<b>5.9</b>	Repeat of Axial strength of lock furniture and fixing	Yes
<b>5.10</b>	Repeat of Free play measurement	Yes
<b>5.11</b>	Repeat of Free angular movement or misalignment	Yes
<b>5.12</b>	Repeat of Torque of return mechanism	Yes
<b>5.13</b>	Axial strength for safety furniture(optional)	N/a
<b>5.14</b>	Corrosion resistance	Yes
<b>8</b>	<b>Marking</b>	Yes
<b>C.2</b>	<b>Requirements for lock furniture for use on fire doors</b>	N/a

No inferences can be made regarding performance against other requirements of this standard

### NOTE.

Tests marked "Not UKAS Accredited" are not covered by the Laboratory UKAS accreditation schedule.

Tests marked " NA" are not applicable to the type of device under test.

Tests marked "NT" not be applied to the device under test.

**Annex C - Suitable for Use on fire door assemblies:**

Tested in a door assembly which satisfies criteria of EN 1634 – 1

Test report No.        N/a  
 Dated                    N/a  
 Result                    N/a

**Classification achieved**

Category of use	Durability	Door mass	Fire resistance	Safety	Corrosion resistance	Security	Type of operation
<b>1-4</b>	<b>6 or 7</b>	<b>---</b>	<b>0,A,B,C,D</b>	<b>0</b>	<b>0 - 5</b>	<b>0-4</b>	<b>A,B,U</b>
2	6	-	0	0	3	0	B

**Clause 8 marking**

Product and or literature, packing etc Should be marked with:

Manufacturer's name or Trade mark.        Häfele  
 Product model identification                903.82.150  
 Classification according to clause 4        Yes  
 Standard number                                Yes  
 The year and week of manufacture        Yes  
 (may be in coded form)